

MEASUREMENT OF THE SOUND INSULATION ACCORDING TO ISO 10140-2:2010

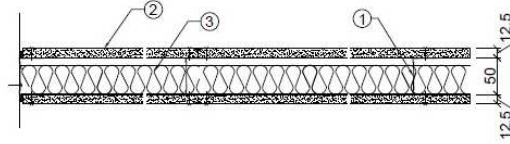


principal: Le Relais

Tested partition

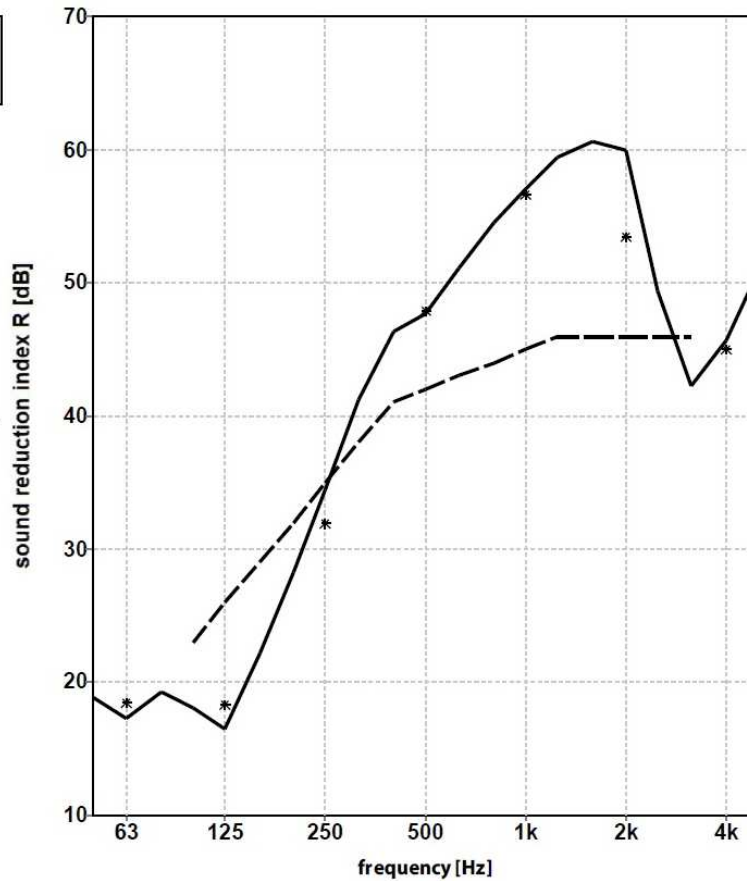
Single framework

- 1: Metal stud CW 50
- 2: 1x 12,5 mm plasterboard AK
- 3: 50 mm cottenwool PM+50



— 1/3 oct.
* 1/1 oct.
- - - ref. curve (ISO 717)

volume measuring room: 111 m³
 volume measuring room: 94 m³
 surface area tested partition: 12 m²
 measured at:
 Peutz Laboratory for Acoustics
 signal: broad-band noise
 bandwidth: 1/3 octave



ISO 717-1:2013

$R_w(C;C_{tr}) = 42(-3;-9)$ dB

$C_{100-5000}; C_{tr,100-5000} = (-2;-9)$ dB

$C_{50-3150}; C_{tr,50-3150} = (-4;-11)$ dB

$C_{50-5000}; C_{tr,50-5000} = (-3;-11)$ dB

| | | | | | | | |
|----------|-------------|-------------|-------------|-------------|-------------|-------------|-------------|
| | 18,9 | 18,1 | 28,3 | 46,3 | 54,6 | 60,6 | 42,2 |
| 1/3 oct. | 17,3 | 16,5 | 34,5 | 47,7 | 57,0 | 59,9 | 45,7 |
| | 19,2 | 22,2 | 41,2 | 51,1 | 59,4 | 49,4 | 50,9 |
| 1/1 oct. | 18,4 | 18,3 | 32,0 | 47,9 | 56,6 | 53,5 | 45,0 |

publication is permitted for the entire page only

Mook, 31-03-2014

Insulat versie 3.14 mode 1. file: a2657 S#67-68 #69